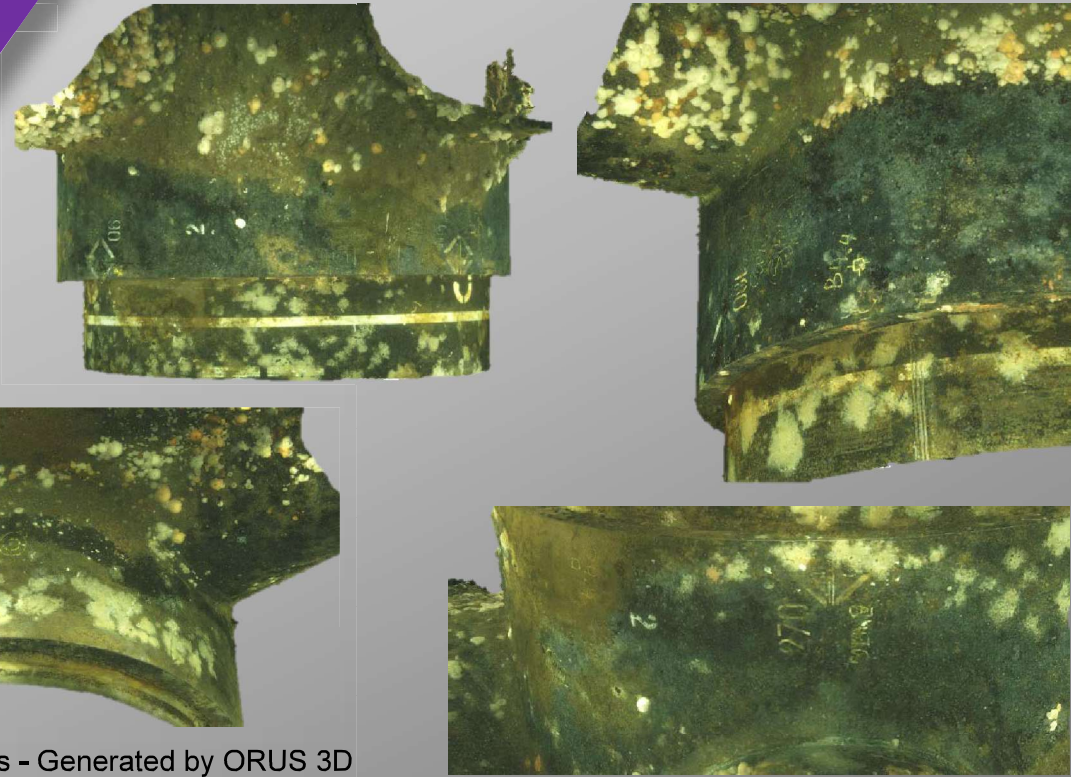


JACKET LEGS INSPECTION



3D models of jacket legs - Generated by ORUS 3D

Client



Project

Jacket Legs Inspection

Vessel / ROV

SIEM N-SEA /
Obs ROV Panther

Date

December 2018

Project type

Inspection for dimensional control

Location

North Sea, German Sector

Water Depth

27 m

Scope Overview

Dimensional control of 6 off jacket leg bottom sections prior installation of subsea clamps :

- Photogrammetric survey of 6 off 2.6 m diameter Jacket legs on 1m high
- Ovality checks on several levels and angular sectors
- Edition of dimensional control charts

Ovality checks with a 2mm accuracy were required and successfully delivered through specific dimensional control charts.

Survey / Processing duration

01:15 per leg / 1.5 days per leg (x6)

3D Models' Accuracy

+/- 1mm

