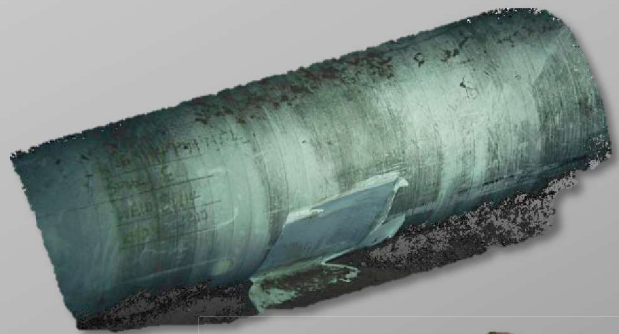


DAMAGE INSPECTION

&

SPOOL - JUMPER

METROLOGY



3D models of Damaged Spool pieces and Jumper metrology
Generated by ORUS 3D

Client



Project
EGINA 1

Vessels / ROVs
FDS2 / SAIPEM 3000
WROV Innovator 30 / 35

Date
September - October 2017

Project type
Damage Inspection
Spool – Jumper Metrologies

Location
Nigeria

Water Depth
1500 m

Scope Overview

First operation in offshore oil & gas industry, SAIPEM calls out COMEX to deploy its innovative photogrammetric survey tool to perform tridimensional inspection of damaged spool pieces. Another big challenge of the project was to successfully complete spool and jumper metrology trial surveys in order to compare the operating time, the post-processing delay and the measurement accuracy with the traditional acoustic method.

Survey
00:20 to 04:30 hours per structure

Processing duration
03:00 hours to 3.5 days per structure

3D Models' Accuracy
+/- 0.5 mm on damage
+/- 100 mm metrology

